

# STUDY OVERVIEW

**PROPEL**

*Smarter Transportation.  
Stronger Communities.*

**US 41**

ProPEL US 41 is a two-year study focusing on the U.S. 41 corridor in Terre Haute and Vigo County. The study limits include approximately 12.5 miles along U.S. 41, from Harlan Drive to E. Haythorne Avenue. The study will identify local transportation needs, develop and evaluate innovative ideas to address those needs, and result in a variety of recommendations for future potential improvements. This study includes Complete Streets, an approach to urban planning and design that aims to create streets that are safe and accessible for all users, including pedestrians, bicyclists, motorists, and transit riders of all ages and abilities.

## STUDY OBJECTIVES



- Identify community needs and visions for the corridor.



- Identify multimodal transportation (including transit, pedestrian, and bicycle) needs and purposes.



- Identify alternatives that meet identified needs and consider community goals.



- Identify alternatives based on a corridor approach.



- Engage the public, stakeholders, and resource agencies throughout the study to educate them on the PEL process and gather feedback from local residents, neighborhoods, businesses, schools, religious leaders, non-profit organizations, government agencies, and more through a variety of engagement methods including online forums, public meetings, one-on-one interviews, and listening sessions.

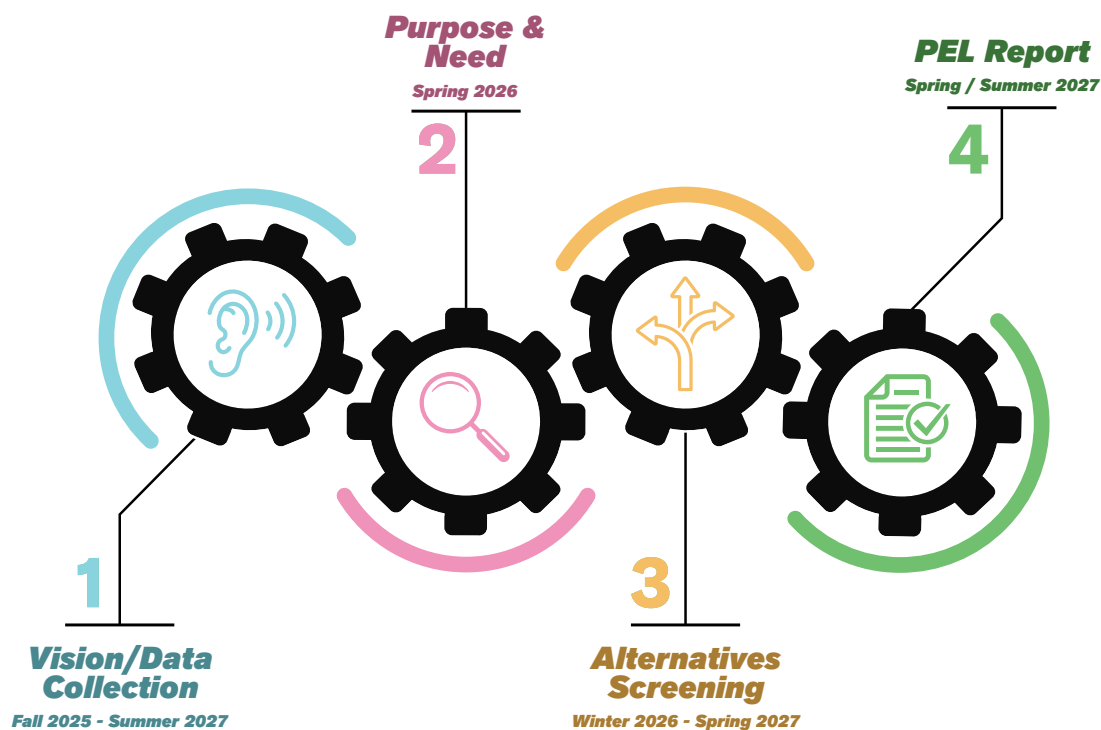


- Build lasting partnerships between neighborhoods, business leaders, and transportation agencies for continued improvement of our transportation network.



- Adopt planning documents into subsequent NEPA (environmental) review processes to potentially expedite development of future improvements.

# STUDY SCHEDULE



## CONTACT US

### FOLLOW OUR PROGRESS

Learn about ProPEL US 41 and share your thoughts!



ProPELUS41.com



@PropelU.S.41



@PropelUS41



@propelUS41



(463) 777-3718

